



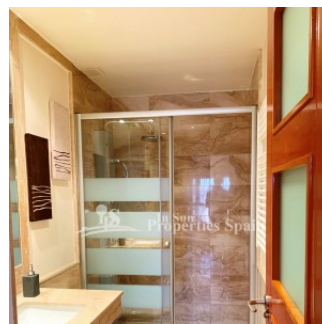
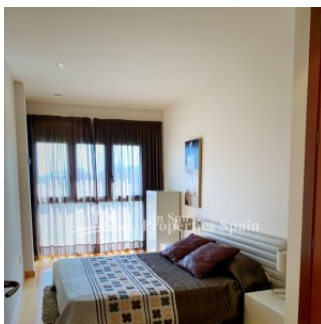
REF: # 7088

ORIHUELA COSTA (PILAR DE LA HORADADA)



#### INFO

<b>PRIJS:</b>	251.000 €
<b>TYPE HUIS:</b>	Bungalow
<b>PLAATS:</b>	Orihuela Costa (Pilar de la Horadada)
<b>SLAAPKAMERS:</b>	3
<b>Badkamers:</b>	3
<b>Build ( m2 ):</b>	215
<b>Plot ( m2 ):</b>	-
<b>Terras ( m2 ):</b>	63
<b>Years:</b>	
<b>Floor:</b>	-
<b>bericht</b>	-



#### BESCHRIJVING

24 fantastic KEY READY REFORMED Townhouses located in the heart of PILAR DE LA HORADADA next to La Rambla. The Townhouses are set over 2 floors with basement parking and solárium. 215m2 construction surface. The ground floor incorporates a lounge and dining area, closed breakfast kitchen and guest toilet. To the first floor you have 3 bedrooms, one with ensuite and family bathroom. Stairs lead to the solarium. The community has a swimming pool and communal gardens to enjoy along with 62m2 of private outdoor space. Included in the price is Air conditioning, Alarm, Safe, Electric shutters, Home automation (pre-installation), Private underground parking and Panoramic community elevator. Pilar de la Horadada has everything that you need to enjoy your family holidays. The coastline of Pilar de la Horadada is more than 4 kilometres long with very differing scenery. There are wide beaches of

fine white sand in sharp contrast with the blue of the sea, and tiny rocky shelves. You can enjoy take a dip in the clear water beaches or discover the urban and nature pathways on foot or by bike, test your aim at the 18th hole of our golf course Lo Romero Golf, taste the traditional cuisine in our hoteliers steleros and feel the fervour of our religious festivities.



<b>STIJL</b> <ul style="list-style-type: none"> <li>• Modern</li> <li>• Contemporary</li> <li>• Mediterranean</li> </ul>	<b>AIRCO</b> <ul style="list-style-type: none"> <li>• Centrale airco</li> </ul>	<b>AFSTAND NAAR :</b> <div>Strand : 3 Km</div> <div>Vliegveld: 40 Km</div> <div>Centrum : 100 m</div>	<b>ORIËNTATIE</b> <div>South East West</div> <ul style="list-style-type: none"> <li>• Tegels</li> <li>• Marmer</li> <li>• Steen</li> </ul>
<b>MEUBELS</b> <ul style="list-style-type: none"> <li>• Niet gemeubileerd</li> </ul>	<b>PARKING NEE CARS</b> <div>Garage geen Cars : 1</div> <div>: 1</div>	<b>ALGEMENE WOONRUIMTE</b> <ul style="list-style-type: none"> <li>• Badkamer ensuite</li> </ul>	
<b>KEUKEN</b> <ul style="list-style-type: none"> <li>• Open keuken</li> <li>• Ingerichte keuken</li> </ul>	<b>TUIN TERRAS</b> <ul style="list-style-type: none"> <li>• Open terras</li> <li>• Aangelegd</li> <li>• Stenen muur</li> <li>• Privé tuin</li> <li>• Gemeenschappelijke tuin</li> </ul>	<b>EXTRA</b> <ul style="list-style-type: none"> <li>• Alarm</li> <li>• Lift</li> </ul>	<b>ENERGETIC CERTIFIED</b> 

**"OUR EXPERIENCE IS YOUR GUARANTEE"**