



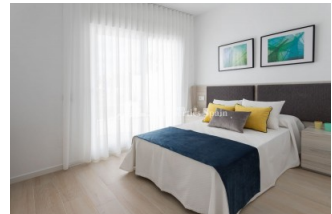
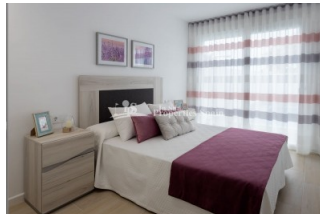
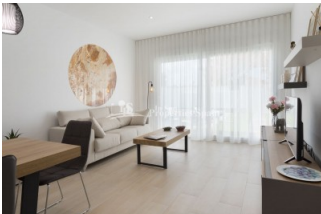
REF: # 7598

COSTA MURCIA (SAN PEDRO DEL PINATAR)



#### INFO

<b>PRIJS:</b>	410.000 €
<b>TYPE HUIS:</b>	Villa's
<b>PLAATS:</b>	Costa Murcia (San Pedro del Pinatar)
<b>SLAAPKAMERS:</b>	4
<b>Badkamers:</b>	3
<b>Build ( m2 ):</b>	-
<b>Plot ( m2 ):</b>	277
<b>Terras ( m2 ):</b>	-
<b>Years:</b>	
<b>Floor:</b>	-
<b>bericht</b>	-




#### BESCHRIJVING

Would you like to design every last corner of your new home? Well, with the Villa Jazmin in SAN PEDRO DEL PINATAOR you have the opportunity to create your new home from scratch. Villa Jazmin is located just 500 meters from the town center, 1km from the Mediterranean Sea and 2km from the Mar Menor. This 277m2 corner plot is very close to all services; supermarkets, boutiques, public transport, health center, restaurants ... and is located in one of the quietest areas of San Pedro del Pinatar. You have a 277m2 corner plot that you can distribute as you see fit. How many rooms do you need? 3,4 ...? , Do you need a garage, office, all on one level or over 2 floors....? Now you have the power. Qualities include; top quality flooring indoors, Ground floor garden with top-quality anti-slip stoneware tiles, dressing room in master bedroom, finished in white colour, with drawers, shelves, clothes rack, trousers pull out, hangers and mirror, Bathrooms with top-quality porcelain sanitary ware. Suspended WC with built-in cistern in both bathrooms. Modern design furniture with porcelain sinks. LED bathroom mirror. Rainfall

shower column. Electric underfloor heating mat in both bathrooms, with insulation and programmable digital thermostat. A programmable 150litre air boiler for hot water in sanitary ware. Video intercom. Interior monitor with a 7" colour screen. Pre-installation for air conditioning. Kitchen in White gloss, doors and edges with LED lighting. Shock absorber hinges with Blum Motion system. Compact Marble Worktop. Balay electrical appliances are included (ceramic hob, oven, extractor fan, fridge integrated in kitchen, dishwasher, microwave and washing machine).Wine cooler for 12 bottles of wine. Your new home is getting closer to you. San Pedro del Pinatar is at the touristic heart of the Costa Cálida. Situated between the Mar Menor and the Mediterranean Sea, this small seaside town is famous for its fishing background, therapeutic mud baths, salt flats and vast stretches of sand. Located at the northern end of the Mar Menor, its name comes from a small church the fishermen dedicated to San Pedro in an area of pine trees. With its agricultural and fishing character, it has busy tourist activity in Lo Pagán, where its mud baths are particularly famous and good for your health. San Pedro del Pinatar is at the touristic heart of the Costa Cálida. Situated between the Mar Menor and the Mediterranean Sea, this small seaside town is famous for its fishing background, therapeutic mud baths, salt flats and vast stretches of sand. \*images show quality from another project from the same builder\*



<b>STIJL</b> <ul style="list-style-type: none"> <li>• Modern</li> <li>• Contemporary</li> </ul>	<b>UITZICHT</b> <ul style="list-style-type: none"> <li>• Panoramisch</li> </ul>	<b>AIRCO</b> <ul style="list-style-type: none"> <li>• Centrale airco</li> </ul>	<b>AFSTAND NAAR :</b> <div>Strand : 1 Km</div> <div>Vliegveld: 50 Km</div> <div>Centrum : 500 m</div>
<b>ORIËNTATIE</b> <div>South East West</div> <div> <ul style="list-style-type: none"> <li>• Tegels</li> <li>• Steen</li> </ul> </div>	<b>MEUBELS</b> <ul style="list-style-type: none"> <li>• Niet gemeubileerd</li> </ul>	<b>PARKING NEE CARS</b> <div>Garage geen Cars : 1</div> <div>: 2</div>	<b>ALGEMENE WOONRUIMTE</b> <ul style="list-style-type: none"> <li>• Badkamer ensuite</li> </ul>
<b>EXTRA</b> <ul style="list-style-type: none"> <li>• Buiten jacuzzi</li> <li>• Inbouwkasten</li> <li>• Veiligheidsdeur</li> <li>• Dubbele beglazing</li> <li>• Videobewaking</li> </ul>	<b>KEUKEN</b> <ul style="list-style-type: none"> <li>• Open keuken</li> <li>• Ingerichte keuken</li> <li>• Graniet bovenblad</li> </ul>	<b>TUIN TERRAS</b> <ul style="list-style-type: none"> <li>• Overdekt terras</li> <li>• Open terras</li> <li>• Aangelegd</li> <li>• Stenen muur</li> <li>• Privé tuin</li> </ul>	<b>VERWARMING</b> <ul style="list-style-type: none"> <li>• Vloerverwarming badkamers</li> </ul>
	<b>ENERGETIC CERTIFIED</b> 		

**"OUR EXPERIENCE IS YOUR GUARANTEE"**