



REF: # 9943

ORIHUELA COSTA (LAS FILIPINAS)



| INFO | |
|----------------|---------------------------------|
| PRIJS: | 230.000 € |
| TYPE HUIS: | Appartement (Penthouse) |
| PLAATS: | Orihuela Costa (Las Filipinas) |
| SLAAPKAMERS: | 2 |
| Badkamers: | 1 |
| Build (m2): | 72 |
| Plot (m2): | - |
| Terras (m2): | 56 |
| Years: | |
| Floor: | - |
| bericht | - |



BESCHRIJVING

KEY READY !! FANTASTIC COMPLEX RESIDENTIAL OF NEW BUILD APARTMENTS PENTHOUSE IN VILLAMARTIN ORIHUELA COSTA with communal pool. This 72m2 penthouse apartment consists of 2 bedrooms, 1 bathrooms, an open plan kitchen with living room, a 13m2 private terrace and a 43m2 solarium. The communal areas are approximately 3.300 m2 and have WIFI, 2 swimming pools, a Jacuzzi and 2 Petanque courts. This residential consists of 94 apartments and is located in Las Filipinas which is in the area of Villamartin Golf on the Orihuela Costa and has been designed to meet the needs of those looking for a Mediterranean lifestyle in a quiet but well established area close to the sea and all amenities. Villamartin was built around one of the most prestigious golf courses on the Costa Blanca "Villamartin Golf Club" and is home to a cosmopolitan and International with one of the healthiest climates in the world. Just a short distance away you can find four other golf courses such as Las Ramblas, Campoamor, Las Colinas and La Finca. It is also home to some of the best blue flag beaches in the region like La Zenia, Cabo Roig and Campoamor only 5km drive away.

The area offers such a wide range of services including weekly markets, the renowned high standard international school “El Limonar” and the famous “La Zenia Boulevard” centre, the largest of its kind in southern Spain! Situated close to many commercial centres including the well know Villamartin Plaza and La Fuente Centre along with many restaurants, fashion shops, supermarkets, banks, pharmacies and much more that you really are spoilt for choice. The area is not just a golfer’s paradise you can find a large range of activities and entertainment for all the family to enjoy, so, whether you are looking for a holiday home, a Golf property or a permanent residence, this development offers everything you could possibly need! The complex is located only 40 minutes from Alicante Airport and 1 hour from Murcia (Corvera) Airport.

ENERGETIC CERTIFIED



| | | | |
|--|--|---|--|
| STIJL | UITZICHT | AIRCO | AFSTAND NAAR : |
| <ul style="list-style-type: none"> • Modern | <ul style="list-style-type: none"> • Panoramisch | <ul style="list-style-type: none"> • Centrale airco | Strand : 5 Km Vliegveld: 60 Km Centrum : 3 Km |
| ORIËNTATIE | MEUBELS | PARKING NEE CARS | <ul style="list-style-type: none"> • Tegels |
| South west | <ul style="list-style-type: none"> • Gemeubileerd | : 1 | |
| KEUKEN | TUIN TERRAS | VERWARMING | EXTRA |
| <ul style="list-style-type: none"> • Open keuken • Ingerichte keuken | <ul style="list-style-type: none"> • Overdekt terras • Open terras • Buitenverlichting • Omheind • Elektrische poort • Gemeenschappelijke tuin | <ul style="list-style-type: none"> • Centraal elektrisch | <ul style="list-style-type: none"> • Buiten jacuzzi • Inbouwkasten • Veiligheidsdeur • Dubbele beglazing • Lift |

PROPERTY GALLERY









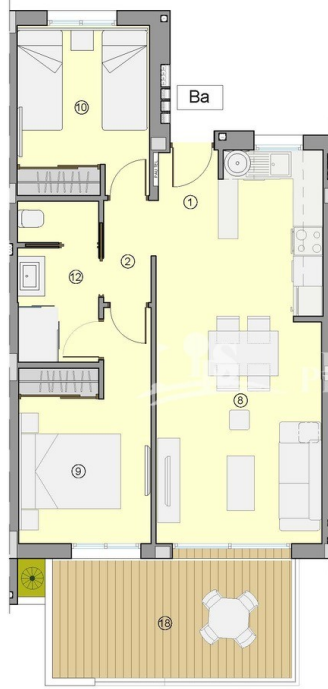












| nº | SUPERFICIES ÚTILES / FLOOR AREA / SURFACES UTILES | TIPO / TYPE / TYPE |
|--|--|----------------------------|
| | | Ba |
| 1 | VESTIBULO / HALL / ENTRÉE | 1,20 m ² |
| 2 | DISTRIBUIDOR / CORRIDOR / CIRCULATION | 2,06 m ² |
| 8 | SALÓN-COMEDOR-COCINA / LIVING-DINING ROOM- KITCHEN / SALON-SALLE A MANGER- CUISINE | 25,21 m ² |
| 9 | DORMITORIO 1 / BEDROOM 1 / CHAMBRE 1 | 10,59 m ² |
| 10 | DORMITORIO 2 / BEDROOM 2 / CHAMBRE 2 | 9,14 m ² |
| 12 | BAÑO 1 / BATHROOM 1 / SALLE DE BAINS 1 | 5,08 m ² |
| TOTAL SUP. ÚTILES / TOTAL FLOOR AREA / TOTAL SURFACES UTILES | | 53,28 m² |
| SUP. CONSTRUIDA INTERIOR / BUILT INTERIOR AREA / SURFACE CONSTRUITE IN TÈRIEUR | | 62,80 m² |
| 18 | SUP. CONSTRUIDA TERRAZA CUBIERTA 1 / BUILT COVERED 1 AREA / SURFACE CONSTRUITE TERRASSE COUVERTE | 13,51 m ² |
| TOTAL SUP. CONSTRUIDA PRIVADA / TOTAL BUILT PRIVATE AREA / TOTAL SURFACE CONSTRUITE PRIVATIVE | | 76,31 m² |

TIPO/TYPE/TYPE Ba

MARZO / MARCH / MARS 2022

TIPO Ba: APARTAMENTO, 2 DORMITORIOS + 1 BAÑO, PLANTA 1 Y 2.
TYPE Ba: APARTMENT, 2 BEDROOMS + 1 BATHROOM, FIRST AND SECOND FLOOR.
TYPE Ba: APPARTEMENT, 2 CHAMBRES + 1 BAIN, PREMIER ET DEUXIÈME ÉTAGE.



Plano sujeto a posibles modificaciones por razones o exigencias de índole técnica o jurídica. Las superficies son aproximadas. Cocina y amueblamiento orientativo, sin valor contractual.
Plan subject to possible modifications for technical or legal reasons. Measurements shown are approximate. Kitchen and furnishings are for display purposes only, with no contractual value.
Plan soumis à modifications en fonction des besoins ou exigences d'ordre technique ou juridique. Les surfaces son approximatifs. Cuisine et ameublement indicatifs, sans valeur contractuelle.

| | | | | | | | | |
|----|----------------------|------------------|-----------------|---------------|--------------------------|--------------------------------|----------------------------------|----------------------------|
| 52 | Piscina adultos | Adult pool | Piscina niños | Children pool | 79 | Buena | Mailboxes | Belle aux lettres |
| 65 | Piscina infantil | Children pool | Piscina niños | Children pool | 81 | Salida aparcamiento | Parking exit | Sortie parking |
| 66 | Entrada peatonal | Entrance | Entrée | Entrée | 85 | Acceso peatonal a aparcamiento | PeDESTRIAN ACCESS TO THE CARPARK | Entrée piétonne au parking |
| 67 | Entrada aparcamiento | Parking entrance | Entrée parking | 90 | Duchas | Showers | Douche | |
| 74 | Jacuzzi | Jacuzzi | Jacuzzi | 114 | Camara peatonal | Camera peatonale | Joue pétonale | |
| 78 | Aparcamiento bici | Bike parking | Parking à vélos | 121 | Centro de transformación | Distribution substation | Transformateur | |



DICIEMBRE / DECEMBER / DÉCEMBRE 2021

PLANTA GENERAL DE URBANIZACIÓN
GENERAL PLAN OF URBANIZATION
PLAN GÉNÉRAL D'URBANISATION



Plano sujeto a posibles modificaciones por razones o exigencias de índole técnica o jurídica. Las superficies son aproximadas.
Plan subject to possible modifications for technical or legal reasons. Measurements shown are approximate.
Plan soumis à modifications en fonction des besoins ou exigences d'ordre technique ou juridique. Les surfaces son approximatifs.



"OUR EXPERIENCE IS YOUR GUARANTEE"