



REF: # 13337

BENIDORM (PLAYA PONIENTE)



INFO

**PRIJS:** 1.439.000 €

**TYPE HUIS:** Appartement (Penthouse)

**PLAATS:** Benidorm (Playa Poniente)

**SLAAPKAMERS:** 3

**Badkamers:** 2

**Build ( m2 ):** 137

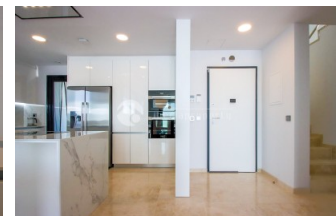
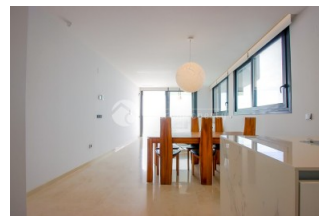
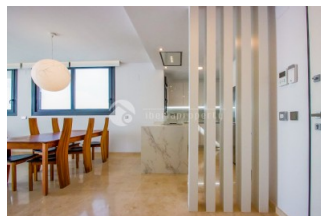
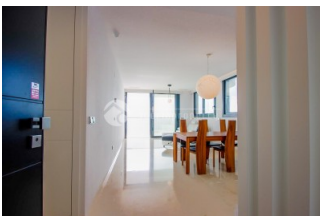
**Plot ( m2 ):** -

**Terras ( m2 ):** 135

**Years:**

**Floor:** 100

**bericht** -



BESCHRIJVING

Exclusive high-end property in the Poniente area of Benidorm, with only one apartment per floor, ideal for those seeking privacy, spaciousness and spectacular views. The property is distributed as follows: a spacious living-dining room with open-plan kitchen, 3 bedrooms and 2 bathrooms, one of them en suite in the master bedroom. Two of the bedrooms have access to a large balcony on the main floor of the property. An internal staircase leads to a large private solarium terrace, equipped with a jacuzzi and an area prepared to install a summer kitchen, perfect for enjoying the climate and the stunning views. As this is a penthouse, the property enjoys incredible views over the entire beach and the surrounding area. The property also includes two parking spaces and three storage rooms: one on the same floor as the apartment, one next to the parking space and another on the garage level. Its features and fittings include underfloor heating throughout the apartment, electric shutters, alarm system, video surveillance, marble floors and hot/cold air

conditioning. Located in Poniente, Benidorm, it is very close to the beach and all amenities, with the beach only a 5-minute walk away. The residential complex offers excellent communal facilities, including a heated indoor pool, outdoor pool and gym.

**ENERGETIC CERTIFIED**

energy house

Image type unknown

[https://www.viass.nl/assets/images/viass/energy/A\\_e](https://www.viass.nl/assets/images/viass/energy/A_e)

<b>STIJL</b>	<b>UITZICHT</b>	<b>AIRCO</b>	<b>AFSTAND NAAR :</b>
<ul style="list-style-type: none"> <li>• Modern</li> </ul>	<ul style="list-style-type: none"> <li>• Panoramisch</li> <li>• Zeezicht</li> <li>• Bergzicht</li> </ul>	<ul style="list-style-type: none"> <li>• Centrale airco</li> <li>• Woonkamer</li> <li>• Keuken</li> <li>• Slaapkamers</li> </ul>	Strand : 200 m Vliegveld: 30 Km Centrum : 50 m
<b>ORIËNTATIE</b>	<b>PARKING NEE CARS</b>	<ul style="list-style-type: none"> <li>• Marmer</li> <li>• Steen</li> </ul>	<b>KEUKEN</b>
South east	Garage geen Cars : 2		<ul style="list-style-type: none"> <li>• Open keuken</li> <li>• Ingerichte keuken</li> </ul>
<b>TUIN TERRAS</b>	<b>VERWARMING</b>	<b>EXTRA</b>	<b>ENERGETIC CERTIFIED</b>
<ul style="list-style-type: none"> <li>• Overdekt terras</li> <li>• Open terras</li> <li>• Buitenverlichting</li> <li>• Tennisbaan</li> <li>• Automatische besproeiing</li> <li>• Fruitbomen</li> <li>• Palmbomen</li> <li>• Speeltuin</li> <li>• Stenen muur</li> <li>• Elektrische poort</li> <li>• Buitenkeuken</li> <li>• BBQ/grill</li> <li>• Paddle tennisbaan</li> <li>• Privé tuin</li> <li>• Gemeenschappelijke tuin</li> </ul>	<ul style="list-style-type: none"> <li>• Centraal elektrisch</li> <li>• Vloerverwarming</li> <li>• Vloerverwarming badkamers</li> </ul>	<ul style="list-style-type: none"> <li>• Buiten jacuzzi</li> <li>• Inbouwkasten</li> <li>• Alarm</li> <li>• Veiligheidsdeur</li> <li>• Dubbele beglazing</li> <li>• Sateliet TV</li> <li>• Bewaking</li> <li>• Opbergruimte</li> <li>• Wasruimte</li> <li>• Lift</li> <li>• Internet</li> <li>• Concierge</li> </ul>	energy house Image type unknown <a href="https://www.viass.nl/assets/images/viass/en">https://www.viass.nl/assets/images/viass/en</a>

**"OUR EXPERIENCE IS YOUR GUARANTEE"**