



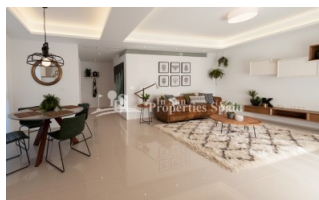
REF: # 5775

QUESADA-ROJALES (DONA PEPA)



#### INFO

<b>PRIJS:</b>	235.000 €
<b>TYPE HUIS:</b>	Appartement
<b>PLAATS:</b>	Quesada-Rojales (Dona Pepa)
<b>SLAAPKAMERS:</b>	3
<b>Badkamers:</b>	2
<b>Build ( m2 ):</b>	115
<b>Plot ( m2 ):</b>	-
<b>Terras ( m2 ):</b>	73
<b>Years:</b>	
<b>Floor:</b>	-
<b>bericht</b>	-



#### BESCHRIJVING

Delivery February 2019. Allegra Residential in DOÑA PEPA is a lovely complex where you can find different model of properties: apartments and townhouses. It's a gated residential, with beautiful green areas, communal swimming pools and parking, designed in Mediterranean style. All of the apartments minimum 89m2 are overlooking to the pool and the communal gardens. These Penthouse apartments boast 2 or 3 bedrooms, 2 bathrooms, living room, kitchen and private minimum 73m2 solarium. The exterior is in the Mediterranean style, but benefiting from a contemporary style interior with superior quality finish. Doña Pepa is an elegant urbanization with wide avenues, wonderful views to the Natural Park and the salt lakes with a wide range of leisure activities and all the

necessary amenities without having to take a car. It is only 30 minutes away from international airports, 35 minutes from Alicante and 5 minutes from the most beautiful beaches of the Costa Blanca. It is an area with good annual temperatures and a great atmosphere. The area of Doña Pepa has a widely varied infrastructure offering a multitude of shops, supermarkets, restaurants, cafes, medical centers, pharmacies, golf courses, banks, a 4\* Hotel with a Spa, a church, a social center, a cultural center, sports areas, an aquapark, a school, two natural parks, a religious center and high quality shopping complexes.



### STIJL

- Modern
- Contemporary

### UITZICHT

- Panoramisch

### AFSTAND NAAR :

Strand : 9 Km

Vliegveld: 30 Km

Centrum : 1 Km

### ORIËNTATIE

South East West

### PARKING NEE CARS

: 1

- Tegels
- Steen

### KEUKEN

- Open keuken
- Ingerichte keuken
- Graniet bovenblad

### TUIN TERRAS

- Overdekt terras
- Open terras
- Gemeenschappelijke tuin

### EXTRA

- Inbouwkasten
- Veiligheidsdeur
- Dubbele beglazing

### ENERGETIC CERTIFIED



**"OUR EXPERIENCE IS YOUR GUARANTEE"**