



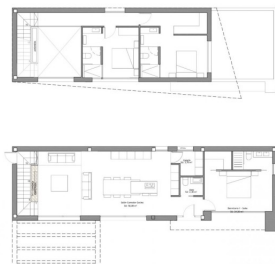
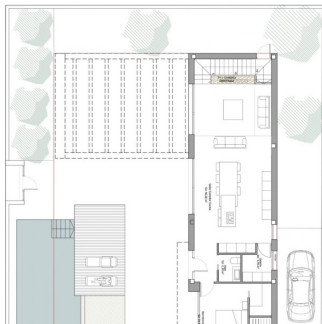
REF: # 9622

ROJALES (GOLF LA MARQUESA (CIUDAD QUESADA))



INFO

PRIJS:	799.900 €
TYPE HUIS:	Villa's
PLAATS:	Rojales (Golf La Marquesa (Ciudad Quesada))
SLAAPKAMERS:	3
Badkamers:	3
Build (m2):	150
Plot (m2):	530
Terras (m2):	40
Years:	-
Floor:	-
bericht	-



BESCHRIJVING

FABULOUS NEW BUILD VILLA, DETACHED, IN CIUDAD QUESADA, ROJALES with private pool. This 150m2 independent villa is built on a 530 plot and consists of 3 bedrooms, 3 bathrooms and is distributed on two levels. It has a 40m2 terrace and a private pool all of which are the very latest in design and quality in Ciudad Quesada. ' Ciudad Quesada is a large urbanization within Rojales became in a small and lovely village provided with all main services and many leisure points. The place has a wonderful location next to La Marquesa golf course. To enjoy the beautiful beaches of Guardamar del Segura only takes ten minutes by car. It is also partially surrounded by the lagoon of La Mata, a space of biodiversity and nature with 700 hectares. Located on a pleasant south-facing hillside in the Alicante province, Ciudad Quesada offers a great

and exciting quality of life in the sun. The city has developed rapidly over the past two decades, with a wide spectrum of properties to suit all needs and budgets, including detached villas, smaller gated communities, bungalows, and apartments. The amenities available within Quesada have also improved over time, so it is now home to a wide variety of bars, restaurants, shops, and supermarkets, along with several banks, dental clinics, pharmacies, hair salons, newsagents, tobacconists, and a new Medical Center located in the Doña Pepa urbanization. There are shopping centers nearby the Habaneras shopping centre in Torrevieja and only 20 minutes drive there is “La Zenia Boulevard” the largest shopping centre in the Alicante region, it’s a one-stop destination for clothes, shoes and general supplies. No matter what you're after, chances are you won't walk out empty-handed. Alicante Airport is 35 mins (50km) drive away and Murcia (Corvera) Airport is 55 minutes (75km).



STIJL	UITZICHT	AIRCO	AFSTAND NAAR :
<ul style="list-style-type: none"> Modern 	<ul style="list-style-type: none"> Panoramisch 	<ul style="list-style-type: none"> Centrale airco 	Strand : +10 Km Vliegveld: 40 Km
PARKING NEE CARS	TUIN TERRAS	EXTRA	ENERGETIC CERTIFIED
: 1	<ul style="list-style-type: none"> Open terras Omheind Privé tuin 	<ul style="list-style-type: none"> Veiligheidsdeur 	 <p>The image shows a vertical energy efficiency scale with seven horizontal bars labeled A through G. The bars are colored in a gradient from green at the top to red at the bottom. A green vertical bar on the right side of the scale is labeled 'IN PROGRESS'.</p>

"OUR EXPERIENCE IS YOUR GUARANTEE"