



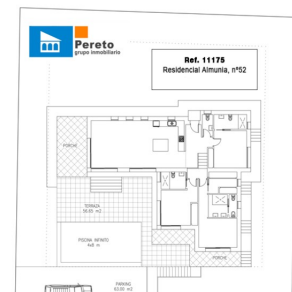
REF: # 10435

DENIA



#### INFO

<b>PRIJS:</b>	538.000 €
<b>TYPE HUIS:</b>	Villa's
<b>PLAATS:</b>	Denia
<b>SLAAPKAMERS:</b>	3
<b>Badkamers:</b>	4
<b>Build ( m2 ):</b>	183
<b>Plot ( m2 ):</b>	840
<b>Terras ( m2 ):</b>	-
<b>Years:</b>	-
<b>Floor:</b>	-
<b>bericht</b>	-



#### BESCHRIJVING

Modern villa with spectacular minimalist design located on a parcel are amazing seaviews in Residencial l'Almunia Rafol. This construction project will be built on a plot of 840 m2. The House has 183,25 m2 and is divided into entrance hall, living/dining room with large windows and direct access to the terrace, kitchen open to the living room, 3 bedrooms each with en suite bathroom and closet, also the main room of the House has dressing room, toilet service. The price also includes the required elevation for the location of the villa, a terrace high with a total of 56,65 m2 all she surrounded with glass and stainless steel handrail. There is also an 8 x 4 pool with infinity, ladder work, focus, and all the necessary equipment. Also included in the price the rush of water and light, the realization of a parking lot of the street-level concrete, wall stone of 60 cm at linde with the street and car door and pedestrian street, and staircase from the ground to the level of an outdoor terrace. Also included are high qualities of construction to the design of the House.

Also includes all the necessary documentation as license, project drawn up by an architect, ten-year insurance etc... Since it is a project the client may vary levels, the qualities of construction or the materials chosen. Rafol de Almunia, and particularly urbanization residential l'Almunia is located just 15 minutes from beautiful sandy beaches, and 15 minutes from Ondara where is located the largest shopping center in the area. The airports of Alicante and Valencia are 1 hour away.

#### ENERGETIC CERTIFIED



UITZICHT

- Panoramisch

PARKING NEE CARS

Garage geen Cars : 1

## PROPERTY GALLERY







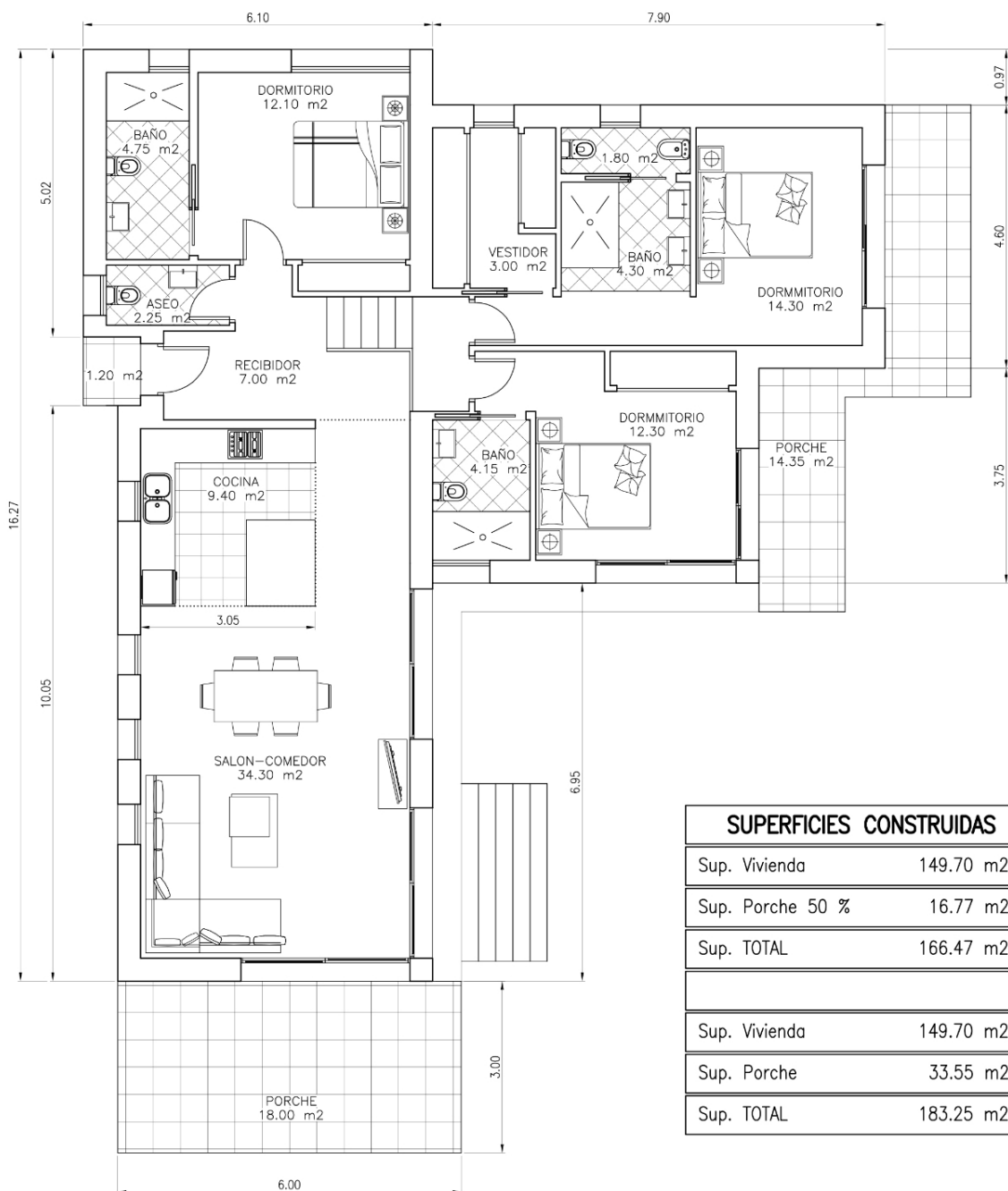


**Pereto**  
grupo inmobiliario

**Ref. 11175**  
**Residencial Almunia, nº52**



C A L L E



#### SUPERFICIES CONSTRUIDAS

Sup. Vivienda	149.70 m <sup>2</sup>
Sup. Porche 50 %	16.77 m <sup>2</sup>
Sup. TOTAL	166.47 m <sup>2</sup>
Sup. Vivienda	149.70 m <sup>2</sup>
Sup. Porche	33.55 m <sup>2</sup>
Sup. TOTAL	183.25 m <sup>2</sup>

Image not found  
<https://www.cmsinmo.com/imagenes/uploads/inmu/4/10435/610435.jpg>

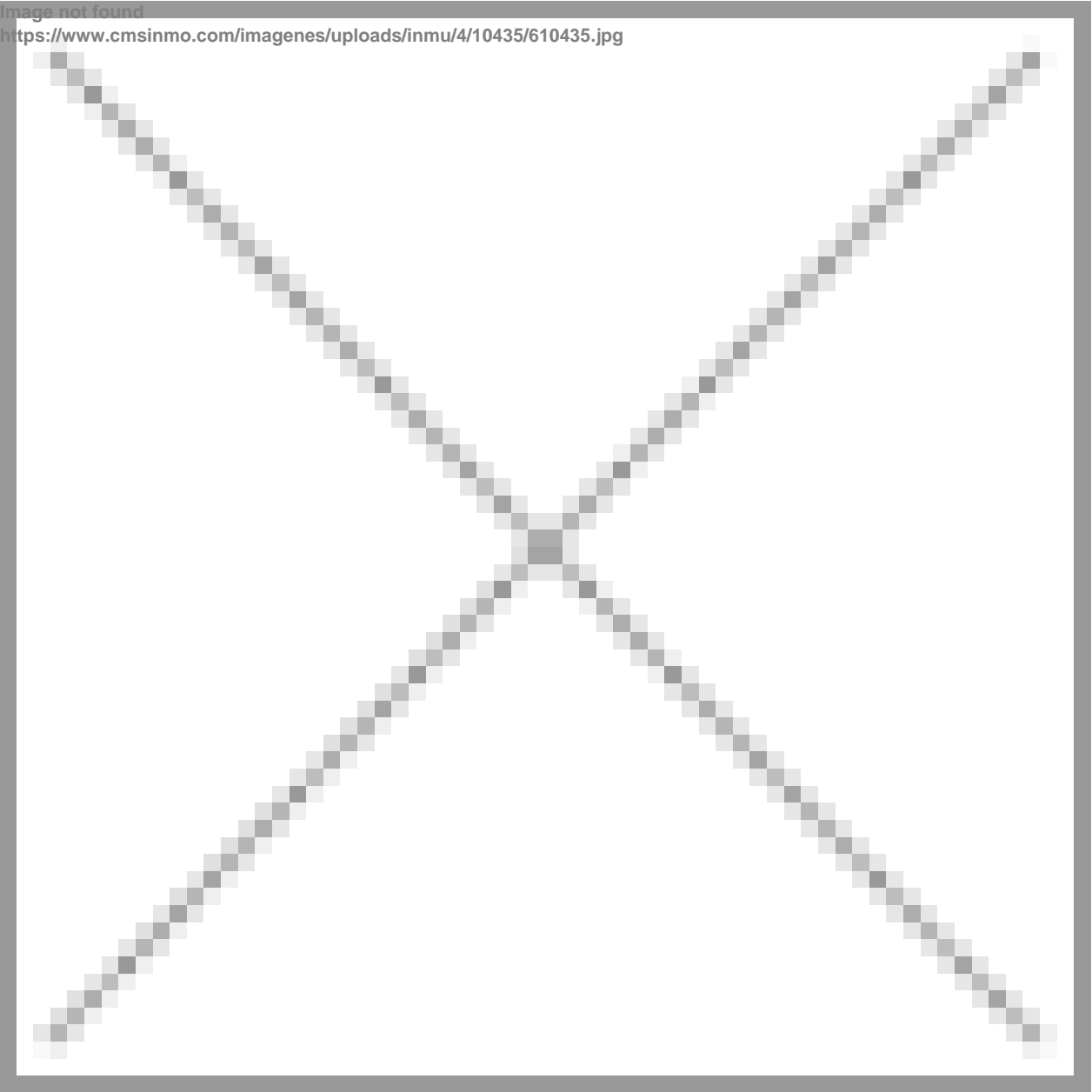




Image not found  
<https://www.cmsinmo.com/imagenes/uploads/inmu/4/10435/710435.jpg>



***"OUR EXPERIENCE IS YOUR GUARANTEE"***