



REF: # 12592

DENIA



INFO

PRIJS:	285.000 €
TYPE HUIS:	Appartement
PLAATS:	Denia
SLAAPKAMERS:	2
Badkamers:	2
Build (m2):	72
Plot (m2):	-
Terras (m2):	-
Years:	-
Floor:	-
bericht	-



BESCHRIJVING

On sale now!!! Phase I of this Mordena and new development of apartments and penthouses just 200 m from the first line of the beach in Las Marinas, Dénia. Apartments and penthouses with 2 and 3 bedrooms, 2 bathrooms, equipped open kitchen, pre-installation of ducted air conditioning, etc. Apartments from €285,000+VAT QUALITY

MEMORIES: •Reinforced concrete structure. •Façade with a single-layer finish combined with porcelain or similar. •PVC exterior carpentry with thermal break, double glazing with "Climalit" type air chamber and low emissives. •Motorized exterior blinds in living room and bedrooms •Armored entrance door to the house. •Porcelain interior flooring or similar, the skirting board will be lacquered to match the interior carpentry. •Vertical walls of bathrooms and toilets in porcelain or similar. •Wall finishes in smooth plastic paint. •Kitchen with high and low furniture, Silestone countertop or similar equipped with extractor hood, hob induction and electric oven. •Suspended vitrified porcelain sanitary fixtures with built-in cistern. •Flat resin shower trays with screen. •Sink with cabinet and mirror in all bathrooms and toilets. •Single-lever faucet. •Built-in lined wardrobes, distributed with hanging bar, drawers and

interior LED lighting. •Production of domestic hot water by Aerothermal, which provides renewable and non-polluting energy, with lower energy consumption. •Outdoor fixtures and electrical and TV outlets on terraces of homes and solariums. •Automatic Video Intercom connection with the main entrance to the complex and at the access to each hallway. •Pre-installation of air conditioning through ducts in the living room and bedrooms. •Curtains in living room and bedrooms. •USB chargers in bedrooms. •Fully fenced urbanization with large garden common areas, two swimming pools, one for children's use. Outdoor parking for bicycles. •Pre-installation for recharging vehicles in the parking lot according to regulations. ***** This quality report is merely informative, subject to possible changes of a technical, legal, commercial and/or execution of the work***** Estimated delivery date for July 2025.



UITZICHT

- Panoramisch



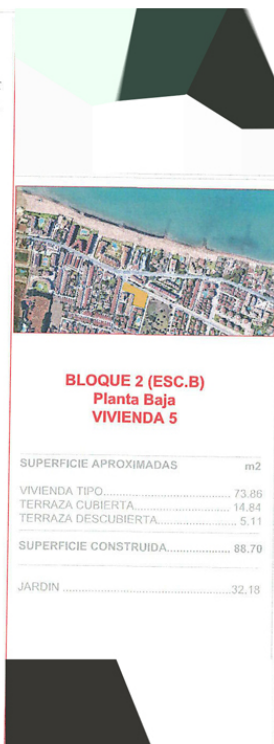
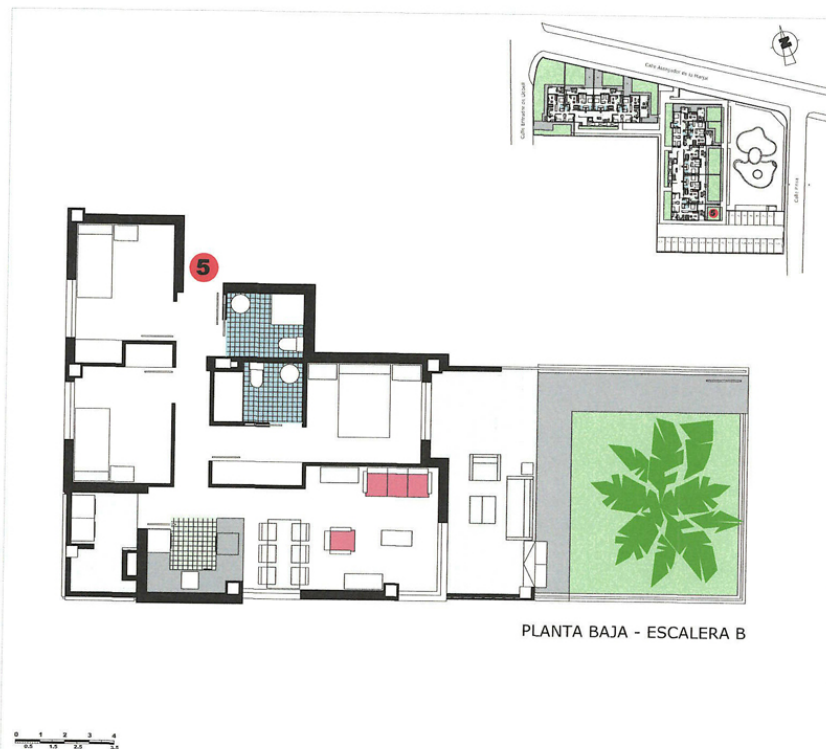


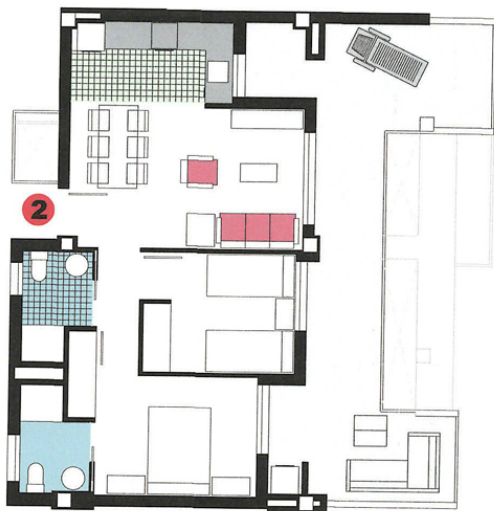
Pl.Baja



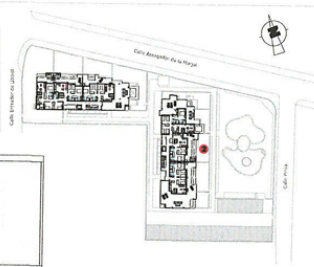
**Planta Conjunto
Planta Baja**







PLANTA 2ª - ESCALERA B



BLOQUE 2 (ESC.B)
Planta 2ª
VIVIENDA 2

SUPERFICIE APROXIMADAS	m2
VIVIENDA TIPO.....	58.29
TERRAZA CUBIERTA.....	19.69
TERRAZA DESCUBIERTA.....	10.07
SUPERFICIE CONSTRUIDA.....	77.98

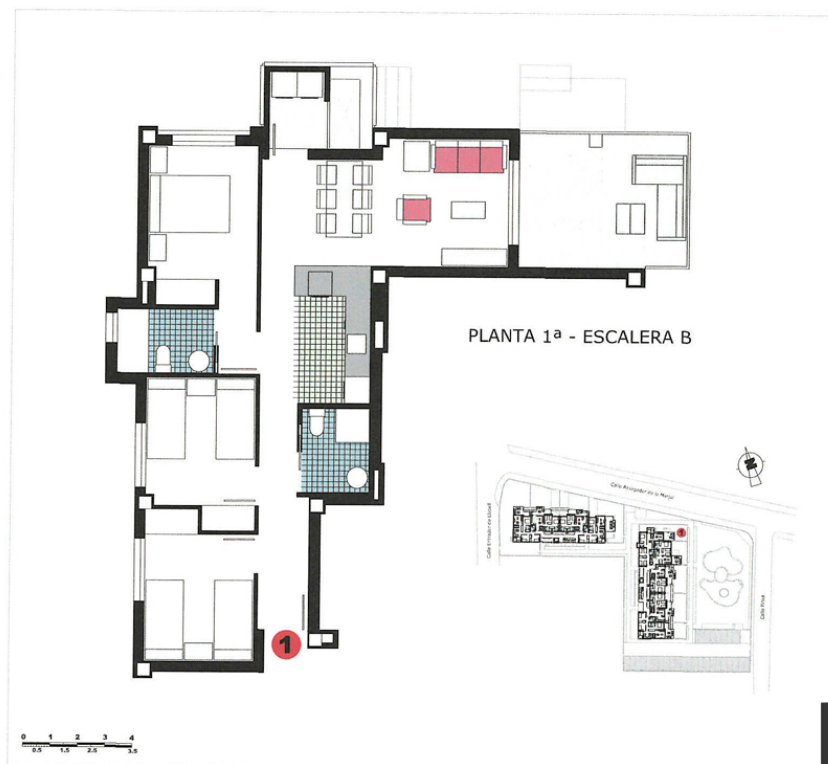


PLANTA 1ª - ESCALERA B



BLOQUE 2 (ESC.B)
Planta 1ª
VIVIENDA 2

SUPERFICIE APROXIMADAS	m2
VIVIENDA TIPO.....	60.22
TERRAZA CUBIERTA.....	0.00
TERRAZA DESCUBIERTA.....	11.23
SUPERFICIE CONSTRUIDA.....	60.22



BLOQUE 2 (ESC.B)
Planta 1ª
VIVIENDA 1

SUPERFICIE APROXIMADAS	m2
VIVIENDA TIPO	77.02
TERRAZA CUBIERTA	5.38
TERRAZA DESCUBIERTA	10.13
SUPERFICIE CONSTRUIDA	82.40

"OUR EXPERIENCE IS YOUR GUARANTEE"