



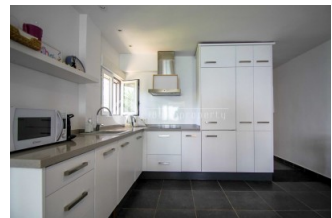
REF: # 13117

ALTEA (CAP NEGRET)



INFO

PRIJS:	365.000 €
TYPE HUIS:	Appartement
PLAATS:	Altea (Cap Negret)
SLAAPKAMERS:	2
Badkamers:	1
Build (m2):	60
Plot (m2):	-
Terras (m2):	-
Years:	1986
Floor:	-
bericht	-



BESCHRIJVING

This charming apartment is located on the seafront, just a 5-minute walk from the town center of Altea and all essential services. Situated on a bright corner of the ground floor, it enjoys abundant natural light throughout the day. The property features a spacious living-dining area with direct access to a glazed terrace offering open sea views—perfect for enjoying the sea breeze year-round. The recently renovated open-plan kitchen integrates seamlessly with the main living space. There are two double bedrooms, one of which boasts beautiful sea views, and a full bathroom. Air conditioning is installed in both the living room and bedrooms for added comfort. An ample storage room is included, ideal for storing bicycles, sports equipment, or even a quad bike. The well-maintained community offers a lovely garden with outdoor dining space and an impressive communal rooftop terrace with a chill-out area, providing panoramic 360° views of the Mediterranean Sea and the nearby mountains. This well-distributed, spacious, and bright property is perfect as a primary residence, holiday home, or a high-demand investment opportunity. Apartment Layout: Bright living-dining room with

direct access to the glazed terrace Renovated open-plan kitchen Glazed terrace with sea views 2 double bedrooms (master with sea views) 1 full bathroom Air conditioning in living room and bedrooms Spacious storage room included Communal garden/terrace with outdoor dining area Communal rooftop terrace with seating area and 360° views."

ENERGETIC CERTIFIED

energy house

Image type unknown

https://www.viass.nl/assets/images/viass/energy/C_e

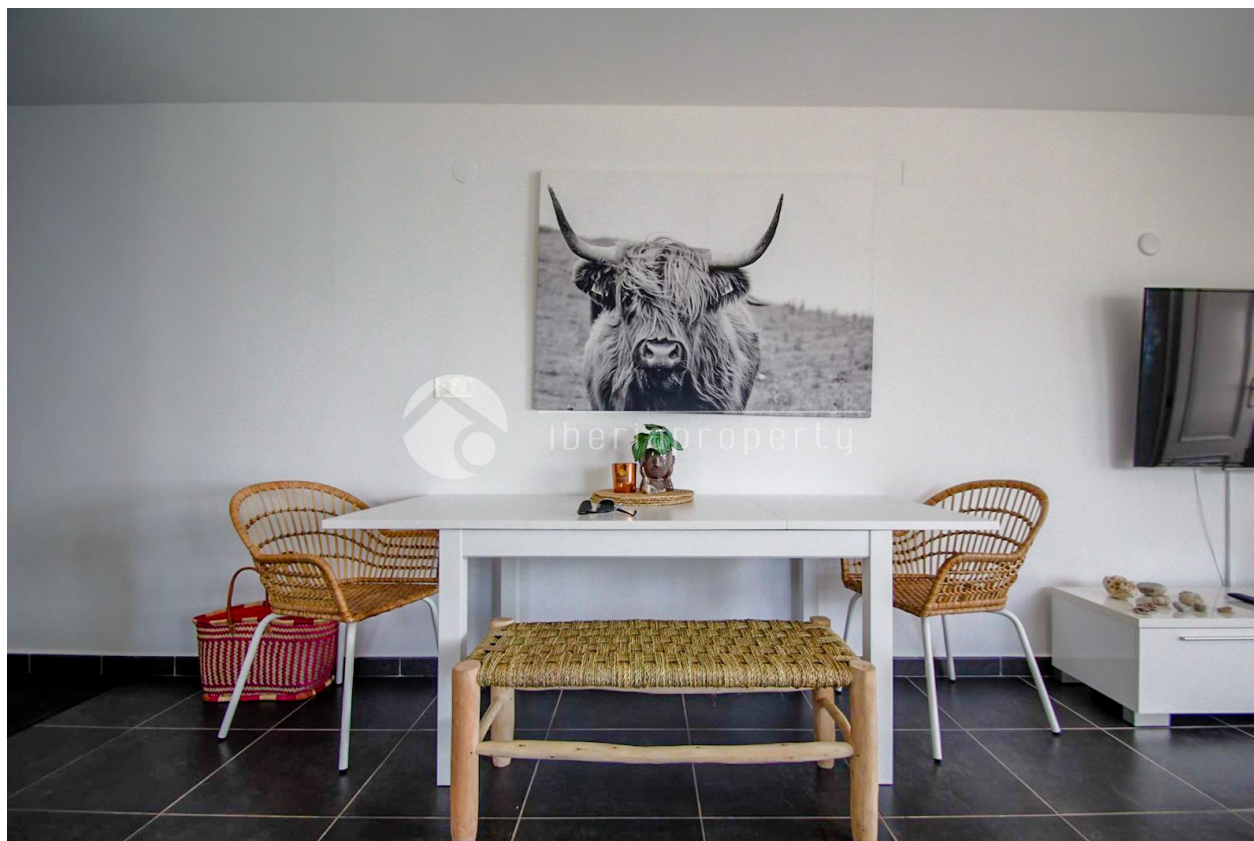
STIJL <ul style="list-style-type: none"> Contemporary Mediterranean 	AIRCO <ul style="list-style-type: none"> Centrale airco 	AFSTAND NAAR : <div>Strand : 50 m</div> <div>Vliegveld: 40 Km</div> <div>Centrum : 1 Km</div> <ul style="list-style-type: none"> Steen 	ORIËNTATIE <div>South east</div>
MEUBELS <ul style="list-style-type: none"> Gemeubileerd 	PARKING NEE CARS <div>Garage geen Cars : 1</div>		KEUKEN <ul style="list-style-type: none"> Open keuken Ingerichte keuken
TUIN TERRAS <ul style="list-style-type: none"> Overdekt terras Buitenverlichting Palmbomen Speeltuin Stenen muur Buitenkeuken Gemeenschappelijke tuin 	VERWARMING <ul style="list-style-type: none"> Centraal elektrisch 	EXTRA <ul style="list-style-type: none"> Veiligheidsdeur Satelite TV Internet 	























"OUR EXPERIENCE IS YOUR GUARANTEE"