



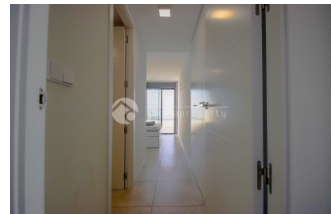
REF: # 13335

FINESTRAT (SIERRA CORTINA)



INFO

PRIJS:	645.000 €
TYPE HUIS:	Appartement (Penthouse)
PLAATS:	Finestrat (Sierra Cortina)
SLAAPKAMERS:	3
Badkamers:	2
Build ( m2 ):	140
Plot ( m2 ):	-
Terras ( m2 ):	-
Years:	
Floor:	4
bericht	-



BESCHRIJVING

Discover this spectacular corner penthouse in the exclusive Seascape residential complex, featuring a southeast orientation that ensures sunlight all day long and uninterrupted, open views of the Mediterranean Sea and the Benidorm skyline. This home stands out for its spaciousness, brightness and an exceptional terrace designed to make the most of Costa Blanca living. Layout Entrance hall 3 bedrooms, all with direct access to a large terrace/balcony Master bedroom with en-suite bathroom 2 full bathrooms (including the en-suite) Open-plan living/dining area, bright and airy, connected to the kitchen Fully equipped kitchen, with views, ideal for everyday living Outdoor space 105 m<sup>2</sup> main terrace, spacious and private Jacuzzi and plenty of room for a chill-out area, outdoor dining and sunbathing Included extras Private parking space Storage room Communal areas (private resort-style facilities) Within the complex you can enjoy: Outdoor swimming pool Indoor swimming pool Gym Coworking room Paddle tennis courts Children's playground Location Just a few minutes by car from Benidorm

and all amenities such as La Marina Shopping Centre, with the airport approximately 30 minutes away—ideal as a permanent residence, second home or investment. A unique property thanks to its orientation, views and outstanding terrace. Ready to enjoy.

## ENERGETIC CERTIFIED



<b>STIJL</b>	<b>UITZICHT</b>	<b>AIRCO</b>	<b>AFSTAND NAAR :</b>
<ul style="list-style-type: none"> <li>• Modern</li> </ul>	<ul style="list-style-type: none"> <li>• Panoramisch</li> <li>• Zeezicht</li> <li>• Bergzicht</li> </ul>	<ul style="list-style-type: none"> <li>• Centrale airco</li> <li>• Woonkamer</li> <li>• Keuken</li> <li>• Slaapkamers</li> </ul>	Strand : 2 Km <hr/> Vliegveld: 30 Km <hr/> Centrum : 1 Km <hr/>
<b>ORIËNTATIE</b>	<b>MEUBELS</b>	<b>PARKING NEE CARS</b>	<ul style="list-style-type: none"> <li>• Steen</li> </ul>
South east <hr/>	<ul style="list-style-type: none"> <li>• Gemeubileerd</li> </ul>	Garage geen Cars : 1 <hr/>	
<b>KEUKEN</b>	<b>TUIN TERRAS</b>	<b>VERWARMING</b>	<b>EXTRA</b>
<ul style="list-style-type: none"> <li>• Open keuken</li> <li>• Ingerichte keuken</li> <li>• Graniet bovenblad</li> </ul>	<ul style="list-style-type: none"> <li>• Open terras</li> <li>• Buitenverlichting</li> <li>• Tennisbaan</li> <li>• Fruitbomen</li> <li>• Palmbomen</li> <li>• Speeltuin</li> <li>• Stenen muur</li> <li>• Elektrische poort</li> <li>• BBQ/grill</li> <li>• Paddle tennisbaan</li> <li>• Privé tuin</li> <li>• Gemeenschappelijke tuin</li> </ul>	<ul style="list-style-type: none"> <li>• Centraal elektrisch</li> <li>• Vloerverwarming badkamers</li> </ul>	<ul style="list-style-type: none"> <li>• Buiten jacuzzi</li> <li>• Inbouwkasten</li> <li>• Veiligheidsdeur</li> <li>• Dubbele beglazing</li> <li>• Sateliet TV</li> <li>• Bewaking</li> <li>• Opbergruimte</li> <li>• Lift</li> <li>• Internet</li> <li>• Concierge</li> </ul>























**"OUR EXPERIENCE IS YOUR GUARANTEE"**