



REF: # 4508

QUESADA-ROJALES (DONA PEPA)



INFO

PRIJS:	299.000 €
TYPE HUIS:	Villa's
PLAATS:	Quesada-Rojales (Dona Pepa)
SLAAPKAMERS:	3
Badkamers:	3
Build (m2):	127
Plot (m2):	215
Terras (m2):	47
Years:	
Floor:	-
bericht	-



BESCHRIJVING

ENNATE VILLAS at Ennate Garden are situated in DONA PEPA. It's a luxury residential with bioclimatic houses enclosed. There is just one remaining. Model Villa LUNA. This is a 127m2 3 Bedroom, 3 Bathroom VILLA with 47m2 roof terrace on a 215m2 plot with private garden and swimming pool. The houses are constructed by excellent materials insulating from the high and low outdoor temperatures. It is located in Doña Pepa near to La Marquesa Golf Course and Guardamar beach. The area has all type of services and a great cultural offer. Doña Pepa is a modern urbanisation belonging to Ciudad Quesada and has all the amenities which include supermarkets, bars, hotel and shops as well as a bank. Ciudad Quesada town centre is a ten minute walk from Doña Pepa. In Ciudad Quesada itself you will find international supermarkets, restaurants, banks, a medical centre as well as a water park. The property is ideally located if you are a golf enthusiast, with La Marquesqa Golf Club just a five minute drive away. The nearest beaches are at Guardamar/Campomar and La Mata ten minutes drive away. Nearest Airports: San Javier (Murcia) - Approx 30 minute drive Alicante Airport -

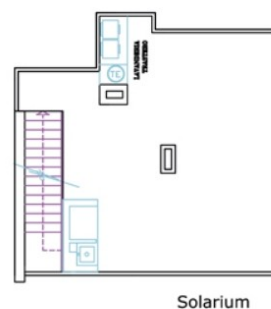
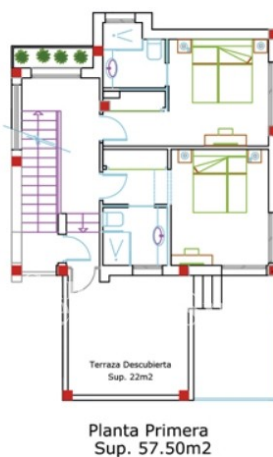
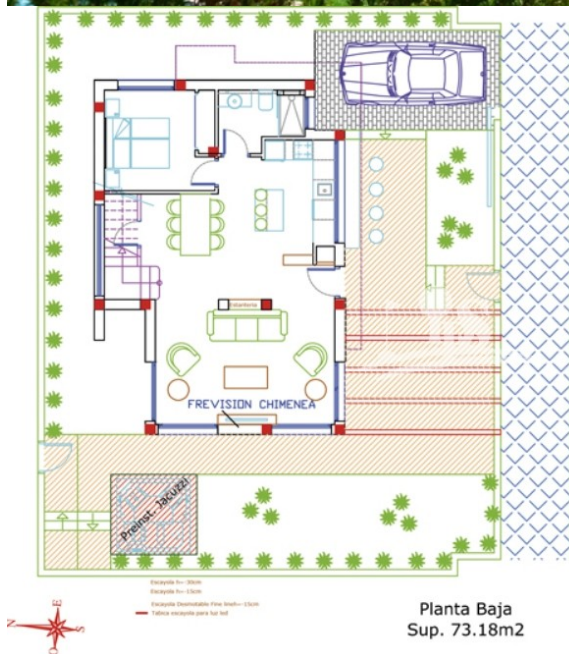
Approx 30 minute drive



STIJL <ul style="list-style-type: none">• Modern• Contemporary	UITZICHT <ul style="list-style-type: none">• Panoramisch	AFSTAND NAAR : <div>Strand : +10 Km</div> <div>Vliegveld: 30 Km</div> <div>Centrum : 2 Km</div> <ul style="list-style-type: none">• Tegels• Steen	ORIËNTATIE <div>South East West</div>
MEUBELS <ul style="list-style-type: none">• Niet gemeubileerd	PARKING NEE CARS <div>: 1</div>		KEUKEN <ul style="list-style-type: none">• Open keuken• Ingerichte keuken• Graniet bovenblad
TUIN TERRAS <ul style="list-style-type: none">• Open terras• Aangelegd• Privé tuin	EXTRA <ul style="list-style-type: none">• Inbouwkasten• Veiligheidsdeur• Dubbele beglazing		







Artistic Image Free Of Contractual Nature







"OUR EXPERIENCE IS YOUR GUARANTEE"