



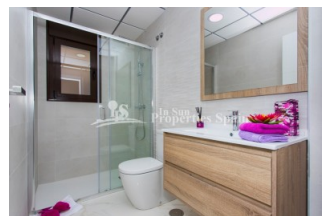
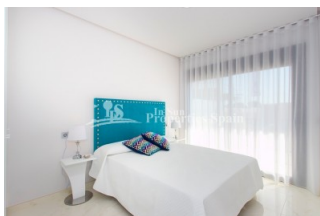
REF: # 5857

ORIHUELA COSTA (LOS ALCAZARES)



INFO

PRIJS:	159.000 €
TYPE HUIS:	Appartement
PLAATS:	Orihuela Costa (Los Alcazares)
SLAAPKAMERS:	2
Badkamers:	2
Build (m2):	75
Plot (m2):	144
Terras (m2):	-
Years:	
Floor:	-
bericht	-



BESCHRIJVING

Located in DOLORES DE PACHECO, MURCIA is this stunning development of 32 properties of different styles with two and three bedrooms and with built surfaces ranging from 75 to 124 m2, and a large common area with swimming pool, Jacuzzi and parking. This is the LAST REMAINING Apartment. Ground floor, 75m2 build on a 145m2 plot with 35m2 garden. Key Ready. Included is; Pre-installation for air conditioning through ducts, Private terrace areas, leading out to the communal areas and Fitted wardrobes in both bedrooms. The entrance door opens into the large open plan main room, which accommodates lounge, dining and kitchen areas. The kitchen is to the rear of this space and is fully fitted with floor and wall cabinets, separated from the rest of the room by a breakfast bar. Sliding doors at the front of the room open out onto the private terrace and the communal areas beyond. To the front of the property is the master bedroom, also with sliding doors opening out onto the terrace. En-suite shower room, fully tiled, with WC and vanity sink unit. By the entrance door is the second bedroom and has sliding doors opening out onto the rear terrace. There is a separate shower room,

equipped with shower, WC and vanity sink unit. The location of this development makes the properties perfect for either a holiday home, or permanent residence. The development has an open aspect offering great views towards the coast and the popular town of Los Alcazares which is just 2km's away. Just 3km from the beaches of Los Alcazares and not far from the villages of Torre Pacheco, San Javier, Los Alcazares and La Manga, and also not far from the historical cities of Murcia and Cartagena. Close to the residential complex are commercial and entertainment centers



STIJL	UITZICHT	AFSTAND NAAR :	ORIËNTATIE
<ul style="list-style-type: none"> Modern Contemporary 	<ul style="list-style-type: none"> Panoramisch 	Strand : 8 Km Vliegveld: 20 Km Centrum : +10 Km	South west
MEUBELS	PARKING NEE CARS		KEUKEN
<ul style="list-style-type: none"> Niet gemeubileerd 	: 1	<ul style="list-style-type: none"> Tegels Steen 	<ul style="list-style-type: none"> Open keuken Ingerichte keuken Graniet bovenblad
TUIN TERRAS	EXTRA		
<ul style="list-style-type: none"> Overdekt terras Open terras Aangelegd Privé tuin Gemeenschappelijke tuin 	<ul style="list-style-type: none"> Inbouwkasten Veiligheidsdeur Dubbele beglazing 		

PROPERTY GALLERY



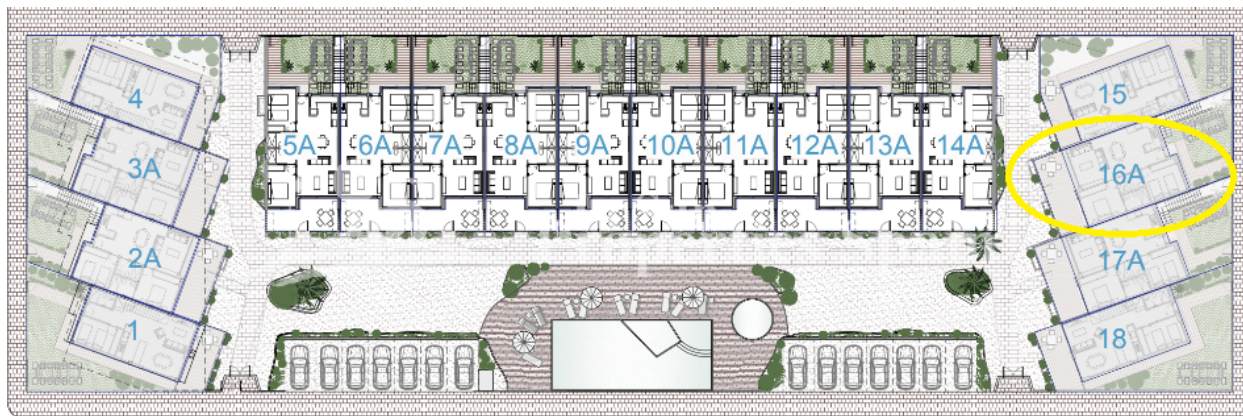
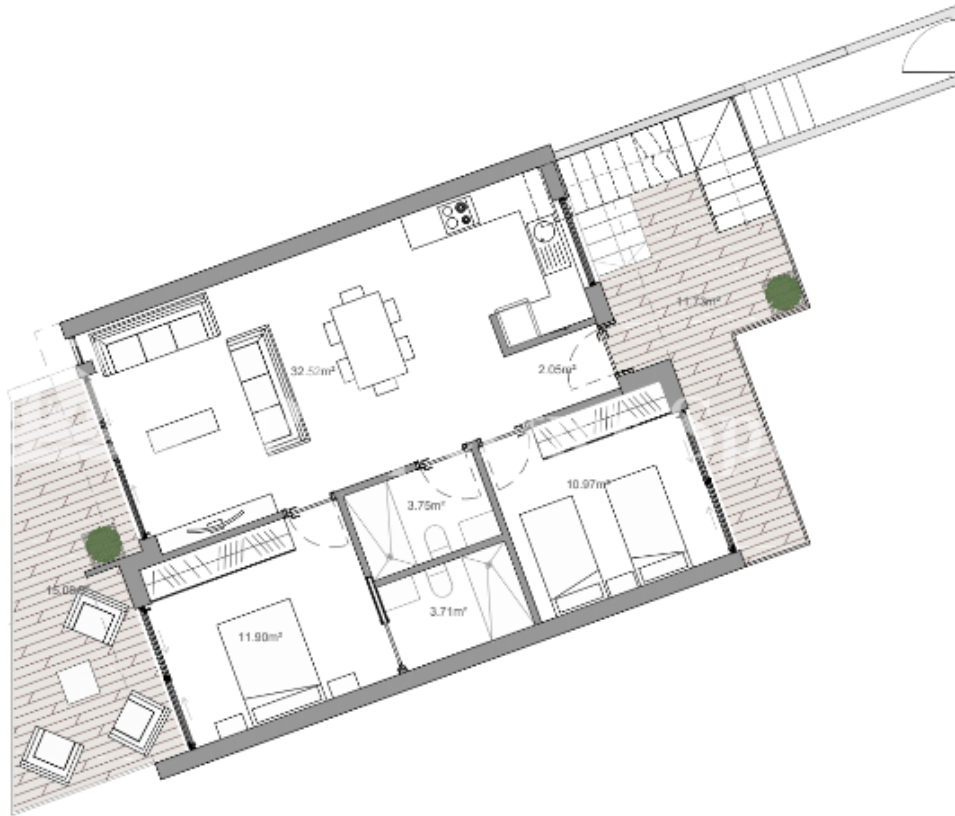














"OUR EXPERIENCE IS YOUR GUARANTEE"