



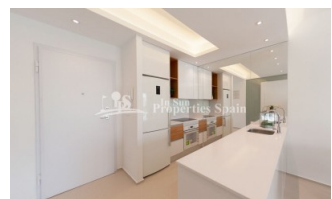
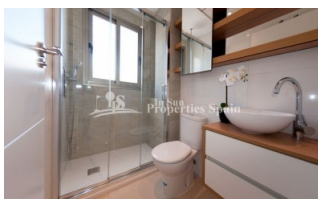
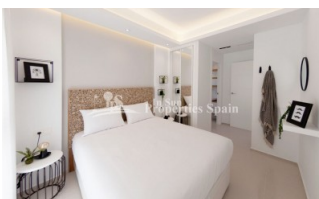
REF: # 5925

QUESADA-ROJALES (DONA PEPA)



INFO

| | |
|-----------------------|-----------------------------|
| PRIJS: | 222.000 € |
| TYPE HUIS: | Appartement |
| PLAATS: | Quesada-Rojales (Dona Pepa) |
| SLAAPKAMERS: | 3 |
| Badkamers: | 2 |
| Build (m2): | 96 |
| Plot (m2): | - |
| Terras (m2): | 129 |
| Years: | |
| Floor: | - |
| bericht | - |



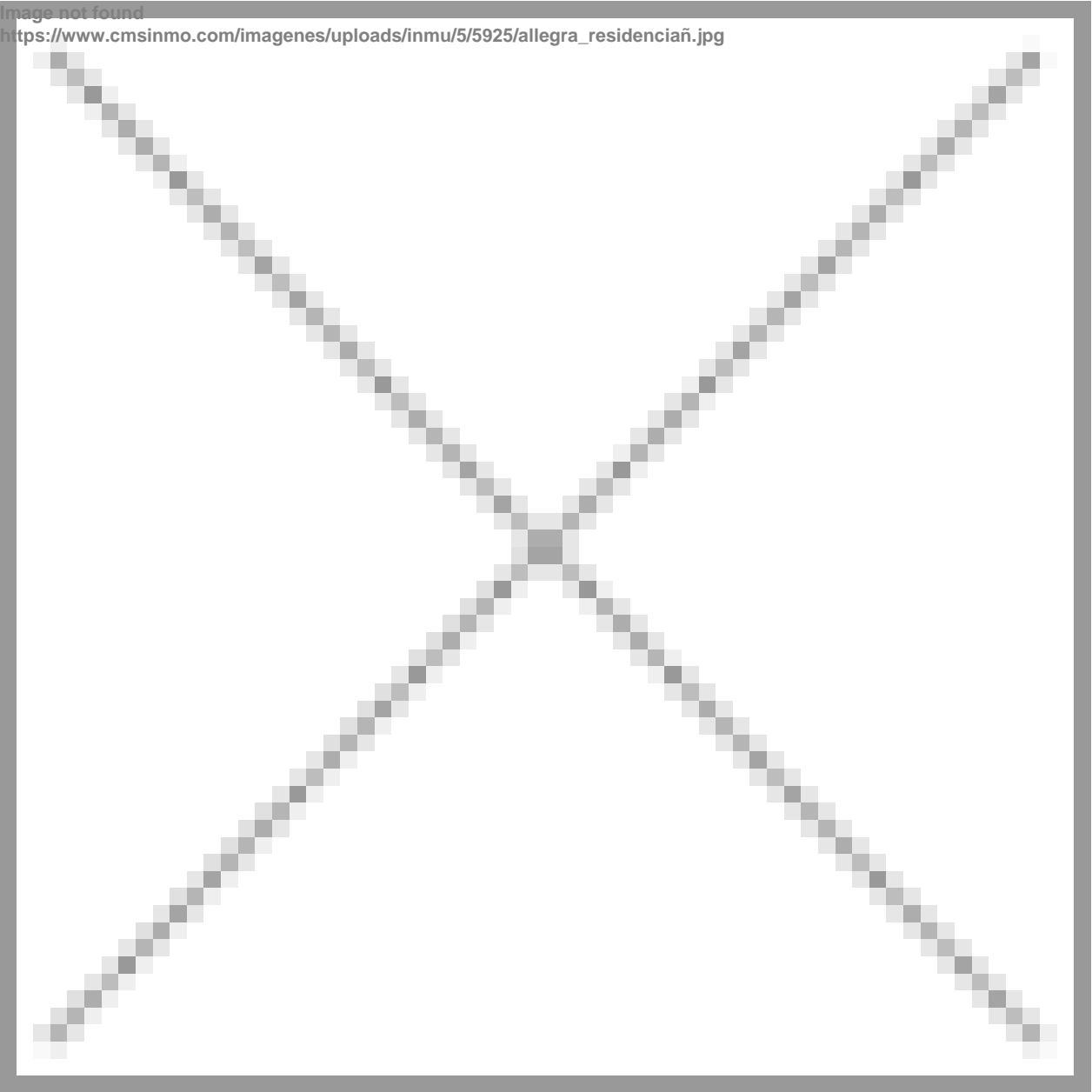
BESCHRIJVING

Delivery September 2019. A STUNNING new development in DONA PEPA of 2 and 3 bedroom, 2 bathroom Ground and Top Floor Apartments. Ground floor of minimum 96m2 come with private 129m2 garden, from €222,000 and First Floor of minimum 96m2 come with private 75m2 roof solarium, from €248,000. These Apartments are from a well renowned builder with over 40 years experience, offering their same signature in terms of design, quality and finish. A home you will be proud to own! Doña Pepa is an elegant urbanization with wide avenues, wonderful views to the Natural Park and the salt lakes with a wide range of leisure activities and all the necessary amenities without having to take a car. It is only 30 minutes away from international airports, 35 minutes from Alicante and 5 minutes from the most beautiful beaches of the

Costa Blanca.It is an area with good annual temperatures and a great atmosphere. The area of Doña Pepa has a widely varied infrastructure offering a multitude of shops, supermarkets, restaurants, cafes, medical centers, pharmacies, golf courses, banks, a 4* Hotel with a Spa, a church, a social center, a cultural center, sports areas, an aquapark, a school, two natural parks, a religious center and high quality shopping complexes.



| | | | |
|---|---|---|---|
| STIJL <ul style="list-style-type: none">• Modern• Contemporary | UITZICHT <ul style="list-style-type: none">• Panoramisch | AIRCO <ul style="list-style-type: none">• Centrale airco | AFSTAND NAAR : <div>Strand : +10 Km</div> <div>Vliegveld: 30 Km</div> <div>Centrum : 1 Km</div> <ul style="list-style-type: none">• Tegels• Steen |
| ORIËNTATIE <div>South East West</div> | PARKING NEE CARS <div>: 1</div> | ALGEMENE WOONRUIMTE <ul style="list-style-type: none">• Badkamer ensuite | |
| KEUKEN <ul style="list-style-type: none">• Open keuken• Ingerichte keuken• Graniet bovenblad | TUIN TERRAS <ul style="list-style-type: none">• Overdekt terras• Open terras• Aangelegd• Privé tuin• Gemeenschappelijke tuin | EXTRA <ul style="list-style-type: none">• Inbouwkasten• Veiligheidsdeur• Dubbele beglazing | |

















"OUR EXPERIENCE IS YOUR GUARANTEE"