



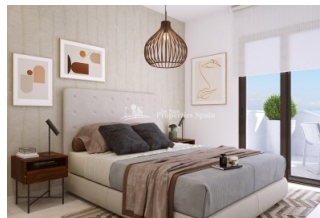
REF: # 9941

ORIHUELA COSTA (LAS FILIPINAS )



#### INFO

<b>PRIJS:</b>	207.000 €
<b>TYPE HUIS:</b>	Appartement
<b>PLAATS:</b>	Orihuela Costa (Las Filipinas )
<b>SLAAPKAMERS:</b>	2
<b>Badkamers:</b>	2
<b>Build ( m2 ):</b>	94
<b>Plot ( m2 ):</b>	-
<b>Terras ( m2 ):</b>	11
<b>Years:</b>	
<b>Floor:</b>	-
<b>bericht</b>	-



#### BESCHRIJVING

FANTASTIC COMPLEX RESIDENTIAL OF NEW BUILD APARTMENTS IN VILLAMARTIN ORIHUELA COSTA with communal pool. This 94m2 apartment consists of 2 bedrooms, 2 bathrooms, an open plan kitchen with living room and a 11m2 private terrace. The communal areas are approximately 3.300 m2 and have WIFI, 2 swimming pools, a Jacuzzi and 2 Petanque courts. This residential consists of 94 apartments and is located in Las Filipinas which is in the area of Villamartin Golf on the Orihuela Costa and has been designed to meet the needs of those looking for a Mediterranean lifestyle in a quiet but well established area close to the sea and all amenities. Villamartin was built around one of the most prestigious golf courses on the Costa Blanca "Villamartín Golf Club" and is home to a cosmopolitan and International with one of the healthiest climates in the world. Just a short distance away you can find four other golf courses such as Las Ramblas, Campoamor, Las Colinas and La Finca. It is also home to some of the best blue flag beaches in the region like La Zenia, Cabo Roig and Campoamor only 5km drive away. The area offers such a wide range of services including weekly markets,

the renowned high standard international school “El Limonar” and the famous “La Zenia Boulevard” centre, the largest of its kind in southern Spain! Situated close to many commercial centres including the well know Villamartin Plaza and La Fuente Centre along with many restaurants, fashion shops, supermarkets, banks, pharmacies and much more that you really are spoilt for choice. The area is not just a golfer’s paradise you can find a large range of activities and entertainment for all the family to enjoy, so, whether you are looking for a holiday home, a Golf property or a permanent residence, this development offers everything you could possibly need! The complex is located only 40 minutes from Alicante Airport and 1 hour from Murcia (Corvera) Airport.



STIJL	UITZICHT	AFSTAND NAAR :	PARKING NEE CARS
<ul style="list-style-type: none"><li>Modern</li></ul>	<ul style="list-style-type: none"><li>Panoramisch</li></ul>	Strand : 5 Km Vliegveld: 70 Km	: 1
KEUKEN	TUIN TERRAS	EXTRA	
<ul style="list-style-type: none"><li>Open keuken</li></ul>	<ul style="list-style-type: none"><li>Overdekt terras</li><li>Gemeenschappelijke tuin</li></ul>	<ul style="list-style-type: none"><li>Buiten jacuzzi</li><li>Inbouwkasten</li><li>Veiligheidsdeur</li><li>Lift</li></ul>	



















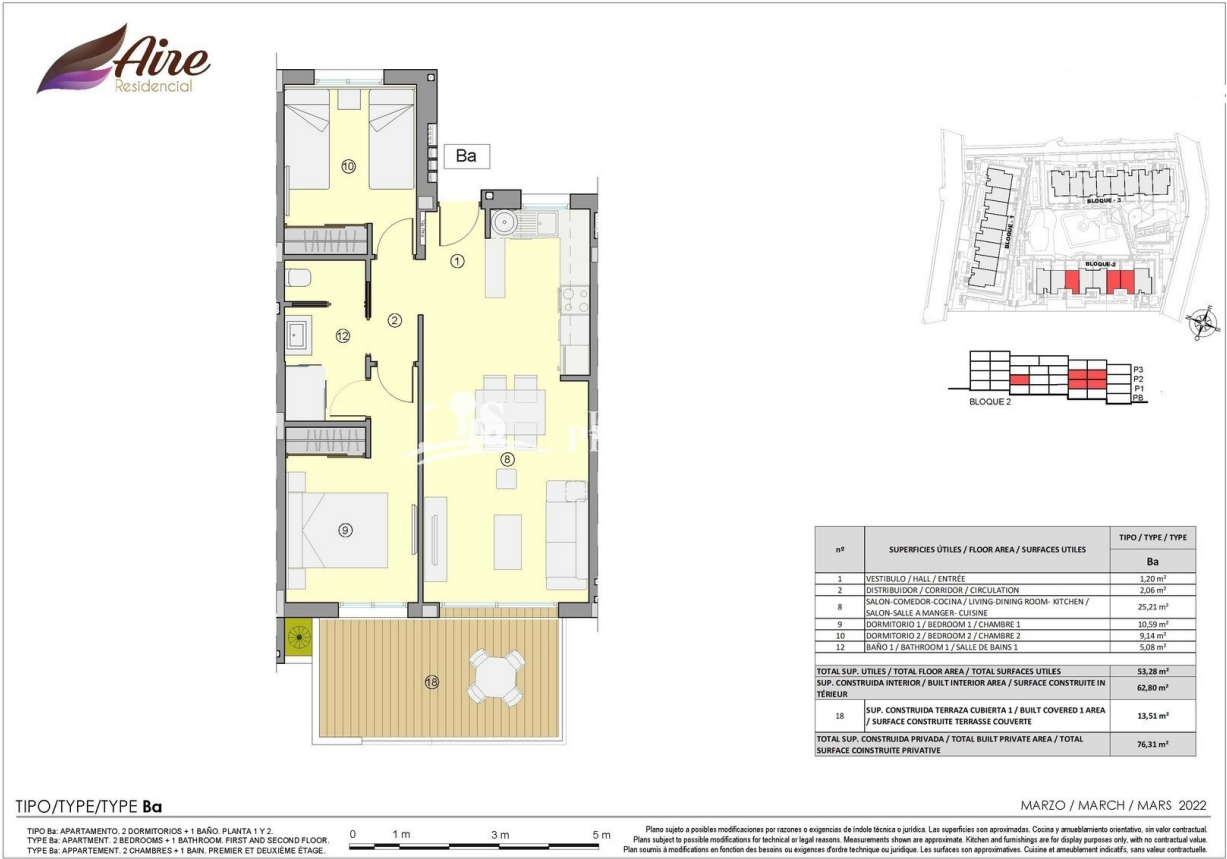














62	Piscina adults	Adult pool	Piscina adults	79	Buñuelos	Mallowes	Belles aux lettres
63	Piscina infantil	Children pool	Piscina infantil	81	Salle appartements	Parking exit	Sortie parking
65	Entrada peatonal	Entrance	Entrée	83	Accès peatonal a aparcamiento	Pedestrian access to the carpark	Entrée piétonnière au parking
67	Entrada aparcamiento	Parking entrance	Entrée parking	90	Duchas	Showers	Douche
74	Jacuzzi	Jacuzzi	Jacuzzi	114	Juegos pelota	Games terrace	Jeux pétanque
76	Aparcamiento bici	Bike parking	Parking a vélos	121	Centro de transformación	Distribution substation	Transformateur



PLANTA GENERAL DE URBANIZACIÓN  
GENERAL PLAN OF URBANIZATION  
PLAN GÉNÉRAL D'URBANISATION



DICIEMBRE / DECEMBER / DÉCEMBRE 2021

PLANTA SUJETA A POSIBLES MODIFICACIONES POR EXIGENCIAS DE ORDEN TÉCNICO O JURÍDICO. LAS QUANTIDADES SON APROXIMADAS.  
PLANS SUBJECT TO POSSIBLE MODIFICATIONS FOR TECHNICAL OR LEGAL REASONS. QUANTITIES SHOWN ARE APPROXIMATED.  
PLAN SUJETS A MODIFICATIONS EN FONCTION DES BESOINS OU EXIGENCES D'ORDRE TECHNIQUE OU JURIDIQUE. LES QUANTITÉS SONT APPROXIMATIVES.

"OUR EXPERIENCE IS YOUR GUARANTEE"